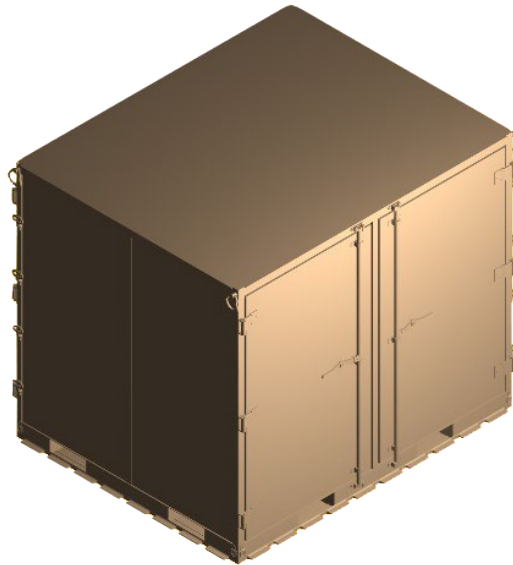


ACCESSORY PRODUCT DATA SHEET

Part #: 10329T



EAC 90 STANDARD OPEN, TAN

CONTRACTOR NAME:	Celina Tent Inc. (CELINA)
MANUFACTURING SOURCE COMPANY:	Highland Engineering Inc. (HEI)
PART NUMBER OR NSN:	Part #: 10329T
SPECIFICATIONS AS APPLICABLE:	
SAFETY AND MOBILITY CERTIFICATION BY MILITARY TEST CENTER	Certification for internal airlift has been granted by ATTLA. External airlift certifiable.
TRAILER	N/A
STOWAGE COMPONENTS INCLUDED WITH TRAILER	Reference the bottom of the document for information.
CARGO VOLUME STOWAGE, FOR SHELTER AND ACCESSORY COMPONENTS, IN CUBIC FEET	Interior Cube: 395 cubic feet Shipping Cube: 495 cubic feet
PHYSICAL DIMENSIONS FOR TRAILER HEIGHT, WIDTH, LENGTH	Height: 90 Inches Width: 88 Inches Length: 108 Inches
EMPTY GVW	Tare weight: 1,515 lb
SPECIAL/ADDITIONAL FEATURES:	EAC 90 STANDARD OPEN, TAN <ul style="list-style-type: none">• Four doors, two on each long side• No centerwall• Forkliftable from all sides• Integral 463L compatible base rails• Winching rings at base corners• Anti-racking door locks• Multi purpose lifting/tiedown provisions at upper corners• Flat bottom provided for roller conveyor mobility• Center posts with slam-latch disconnect• Roof access steps