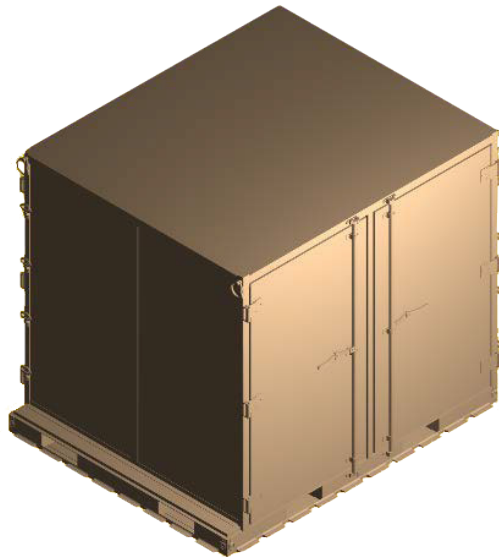


# ACCESSORY PRODUCT DATA SHEET

Part #:10317T



## EAC 90 AISLE, TAN

<b>CONTRACTOR NAME:</b>	Celina Tent Inc. (CELINA)
<b>MANUFACTURING SOURCE COMPANY:</b>	Highland Engineering Inc. (HEI)
<b>PART NUMBER OR NSN:</b>	Part #: 10317T
<b>SPECIFICATIONS AS APPLICABLE:</b>	
<b>SAFETY AND MOBILITY CERTIFICATION BY MILITARY TEST CENTER</b>	Certification for internal airlift has been granted by ATTLA. External airlift certifiable.
<b>TRAILER</b>	N/A
<b>STOWAGE COMPONENTS INCLUDED WITH TRAILER</b>	Reference the bottom of the document for information.
<b>CARGO VOLUME STOWAGE, FOR SHELTER AND ACCESSORY COMPONENTS, IN CUBIC FEET</b>	Interior Cube: 368 cubic feet Shipping Cube: 495 cubic feet
<b>PHYSICAL DIMENSIONS FOR TRAILER HEIGHT, WIDTH, LENGTH</b>	Height: 90 Inches Width: 88 Inches Length: 108 Inches
<b>EMPTY GVW</b>	Tare weight: 1,750 lb
<b>SPECIAL/ADDITIONAL FEATURES:</b>	<p>EAC 90 AISLE, TAN</p> <ul style="list-style-type: none"><li>• Four doors (two on each 108 inch side)</li><li>• Forkliftable from all sides</li><li>• Integral 463L compatible base rails</li><li>• Winching rings at base corners</li><li>• Anti-racking door locks</li><li>• Multi purpose lifting/tiedown provisions at upper corners</li><li>• Flat bottom provided for roller conveyor mobility</li><li>• Center posts with slam-latch disconnect</li><li>• Roof access steps</li><li>• Has centerwall</li><li>• Equipped with aisleway</li><li>• Integrated track for shelving</li></ul>