

# C30 SERIES OVERVIEW

## CELINA Dome Shelter

4K Dome NSN: 5410-01-455-2004  
8K Dome NSN: 5410-01-494-5130



### Description

CELINA's 4K and 8K Dome shelters are modular shelter systems built and designed to be completely air transportable. The rugged design adapts to changing climates and is constructed of an anodized aluminum frame system. CELINA's Dome shelter is available in standard configurations that supports a tri-lid door or "big mouth door" to house various maintenance functions.

### Features

- Designed for rapid air transport
- Unbent anodized aluminum frame support system
- Steel joiners at eave and apex locations
- Desert tan or camouflage green color options
- 100% on-ground installation capable
- Minimal tool requirements
- Packs out in Bicon/ISU90 Containers
- Electrical system with ventilation
- Modular design
- Versatile set-up on sand, concrete/asphalt, gravel/hard-pack

### Intended Uses

- General purpose
- Billeting
- Storage
- Maintenance
- Aircraft
- Vehicle
- Morale

### Specifications

- Resists wind speeds up to 105 mph
- Withstands 20 psf of snow
- Rain load of 4" per hour with 40 mph winds
- Temperature limits -25 to 140 °F
- Water resistant, flame retardant fabric
- 15'W x 12'H Fabric Vehicle Door
- 4K Dome NSN: 5410-01-455-2004
- 8K Dome NSN: 5410-01-494-5130
- Designed to meet or exceed US Military performance specifications

### Optional Add-Ons

- ISU90 Containers options for air transportation
- Additional bays
- Flooring
- ECU's



BERRY  
Amendment



Contract Holder  
Contract # 47QSMS24D0092



# C30 SERIES OVERVIEW

## CELINA Dome Shelter

4K Dome NSN: 5410-01-455-2004  
8K Dome NSN: 5410-01-494-5130



Part Number	NSN	Type	Dimensions	End Configurations
C-9434477-30-T	5410-01-455-2004	4K	69'5" W x 89'3" L, 11' Eaves	Tri-lid/Gable Ends
C-9434477-20-T	5410-01-494-5130	8K	69'5" W x 116'3" L, 11' Eaves	Gable Ends



Electrical Panel



Ventilators (External/Electric Roof Ventilator)



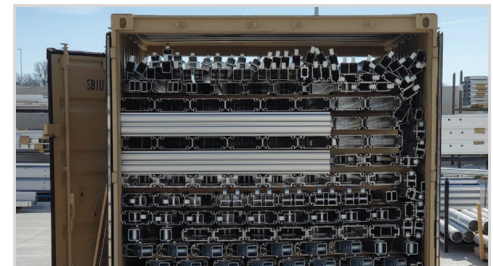
Lighting Hubs



Tri-lid Door (Full-Width Aircraft Door)



Gable End with Fabric Vehicle Door and Personnel door



Dome Pack Out