

C23 SERIES OVERVIEW

CELINA Large Area Maintenance Shelter (LAMS)



Description

CELINA's LAMS are versatile for aircraft and vehicle maintenance as well as a general storage purposes. Easily relocatable due to the modular design, the LAMS can be constructed with gable end walls or retractable tri-lid doors. CELINA LAMS are expeditionary, pre-engineered, and highly reliable.

Features

- Tan 686A (color #33446) or camouflage green 483 fabric color options
- Pre-engineered anodized aluminum frame support system
- Gable wall and tri-lid door options for maximum versatility
- Easily relocatable and ground erectable
- Pre-assemble hardware minimizing on-site assembly
- Integrated keder tracks for simple fabric attachment
- Modular design allows for expandability

Intended Uses

- General purpose
- Storage
- Maintenance
- Aircraft
- Vehicle
- Personal use (Gyms, DFAC)

Specifications

- Engineered to 90 mph wind load (up to 135 mph avail)
- Engineered 8 psf of snow for up to 12 hours (up to 20 psf avail)
- Rain load of 4" per hour with 40 mph winds
- Water resistant, flame retardant fabric
- Berry Amendment Compliant
- Designed to meet or exceed US Military performance specifications

Optional Add-Ons

- Wind bracing
- Portable solid flooring
- Climate control kits (ECU/liners)
- ISO shipping containers
- Metal roll up doors
- On-site installation including SME training and support options
- Secured Storage



BERRY
Amendment



Contract Holder
Contract # 47QSMS24D0092

C23 SERIES OVERVIEW

CELINA Large Area Maintenance Shelter (LAMS)



Intended Use Variations:

The CELINA LAMS is a portable, temporary facility that is available in different styles

- **Storage (Type S)** is the basic style used for general storage. Door options include standard personnel and vehicle door styles.
- **Aviation (Type A)** Allows aircraft to be housed and serviced. Designed with retractable tri-lid doors that open the entire width of the structure.
- **Vehicle (Type V)** Has doors sized for various types of vehicles and also provides space for storage and maintenance.
- **Drone (UAV)** Has a wider width with a lower profile designed to house drone aircrafts. Lower overall height improves engineering performance.
- **Configure to order (CTO)** Uses common components from LAMS S, A, V and UAV specifications to meet customer requirements.

Part Number	NSN	*Fabric Color	Type	Dimensions	End Configurations
C23052X050GG-T	8340-01-721-3551	Tan	CELINA	52' W x 50' L, 16' Eaves	Gable Ends
C23052X050GG-G	8340-01-721-3526	Green	CELINA	52' W x 50' L, 16' Eaves	Gable Ends
C23052X063GG-T	Pending	Tan	S	52' W x 63' L, 16' Eaves	Gable Ends
C23075X192BB-T	5410-01-724-2703	Tan	A	75' W x 192' L, 16' Eaves	Bi-Lid Ends
C23075X192BB-G	5410-01-724-2703	Green	A	75' W x 192' L, 16' Eaves	Bi-Lid Ends
C23075X195TT-T	8340-01-707-9507	Tan	A	75' W x 195' L, 16' Eaves	Tri-Lid Ends
C23075X128BB-T	5410-01-724-4085	Tan	V	75' W x 128' L, 16' Eaves	Bi-Lid Ends
C23075X128BB-G	5410-01-724-4085	Green	V	75' W x 128' L, 16' Eaves	Bi-Lid Ends
C23075X132TT-T	8340-01-707-9546	Tan	V	75' W x 132' L, 16' Eaves	Tri-Lid Ends
C23075X122TG-T	Pending	Tan	CTO	75' W x 122' L, 16' Eaves	Tri-Lid/Gable End
C23083X142TG-T	8340-01-721-4062	Tan	UAV	83' W x 142' L, 10' Eaves	Tri-Lid/Gable End
C23083X142TG-G	8340-01-721-4045	Green	UAV	83' W x 142' L, 10' Eaves	Tri-Lid/Gable End
C23083X164TT-T	8340-01-721-4108	Tan	UAV	83' W x 164' L, 10' Eaves	Tri-Lid Ends
C23083X164TT-G	8340-01-721-4101	Green	UAV	83' W x 164' L, 10' Eaves	Tri-Lid Ends

* Camouflage green 483 fabric color options available for all LAMS shelters. Standard sizes listed LAMS attributes can be modified at the customer's request to provide shelters to match any need.



Gable end walls provide supports for personnel doors and entry ways



Tri-lid doors allow for maximum clearance when entering the shelter



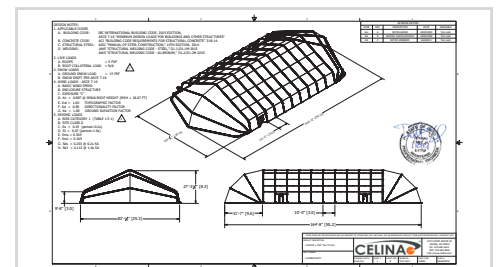
Keder fabric panels install quickly and easily



Standard beam design, including integrated keder track



Locking purlins provide enhanced stability across the shelter



Pre-Engineered with Professional Engineer stamp